

WATTEREDGE-UNIFLEX®

Power, Performance and Quality. That's the philosophy behind all of the products designed and manufactured by the Power Professionals at Watteredge-Uniflex.® We're a world-class company that offers the best in cutting-edge technology for engineered furnace secondary circuits, and resistance welding cables and secondary connectors. Only Watteredge-Uniflex offers you maximum performance at the lowest possible cost.

Engineering Support

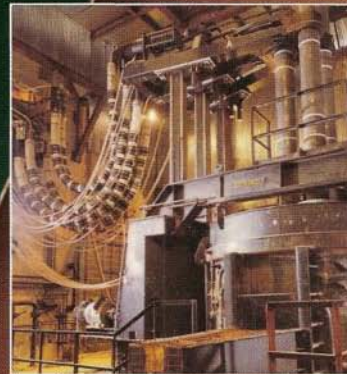
Our highly trained engineering support staff will help you, whether you're designing components from scratch, or redesigning a current system for maximum efficiency and minimum cost. We're also available on-site until your job is completed.

Customized Products

If you can't find what you need in stock, we can design it – quickly and cost-effectively. The Watteredge-Uniflex team of Power Professionals has the expertise to create and produce quality products built specifically for your manufacturing needs.

Inventory Management

At Watteredge-Uniflex, we stock just what you need when you need it. If your power needs change, we'll make the change with you, smoothly and seamlessly.



PROMISES FOLLOWED BY PERFORMANCE



GMR SALES, INC.

14048 W. Petronella Dr. #103
Libertyville, IL 60048

(817) 267-8442 • Fax (817) 267-8443

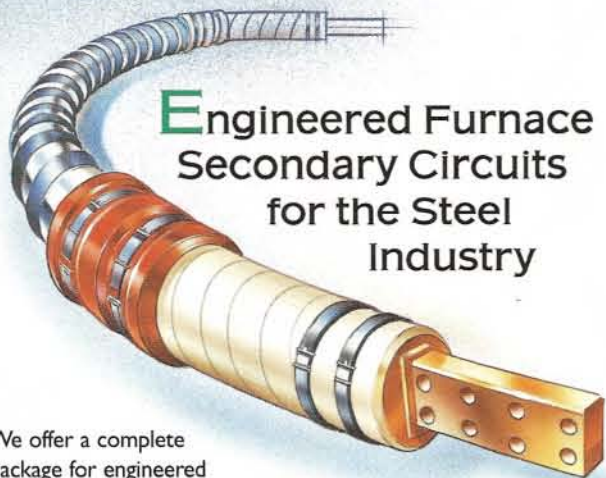
567 Miller Road
Avon Lake, Ohio 44012-2304

Phone: (440) 871-9215

Fax: (440) 933-8248

web: www.watteredgeuniflex.com

email: watteredge@centuryinter.net



Engineered Furnace Secondary Circuits for the Steel Industry

We offer a complete package for engineered furnace secondary circuits, from design to build. This includes: terminals and transitions; delta closures; water-cooled cables; bus tubes; holders; and electrode shoes. We also offer press-welded flexibles and special jumpers for the chlorine, electro galvanizing and plating industries.

Water & Air Cooled Delta Closures

Watteredge-Uniflex® water- and air-cooled delta closures offer the finest construction, efficiency and integrity while providing the lowest impedance. All our delta closures are hydrostatically tested and preassembled for easy installation.



Furnace Products & Applications

Our furnace bus units are manufactured for the transfer of high amperage in all phases of heavy industrial applications.

Anti-Chafing Gear

Our anti-chafing gear helps maintain equal cable spacing, and reduces heat build-up, chafing and friction.

Fabrication Repair Service

You can depend on Watteredge-Uniflex for the three "Rs" – Reconditioning, Repair and Rebuilding – for your electric arc furnace cables and holders. We'll service and repair parts regardless of the manufacturer, giving your furnace longer service life and better value, all at a reasonable cost.



Resistance Welding Cables & Secondary Connectors for Robotic Welding



Watteredge-Uniflex's advanced design in alternate polarity resistance welding cables increases performance and longevity, producing the lowest possible inductive resistance. The unique star separator design maintains strong strand position and excellent water flow. We also include hi-temp internal/external restraining collars to minimize stress in the bending area and low inductive reactance to produce overall lower transformer KVA demand.

Custom-Made Laminate Shunts

Watteredge-Uniflex manufactures a broad variety of shunts using our patented Pressweld™ technology. Our shunts provide optimal electrical values, while effectively eliminating the costly problem associated with resistive voltage losses. This unique process gives our shunts resistance values equal to those of flat copper bar. Our shunts also minimize voltage loss, maintain uniform flow of current and are very cost-effective.



Braided Flexible Connectors

Watteredge-Uniflex's braided flexible connectors deliver the maximum amount of electrical power at peak efficiency, and at half the resistance levels of present connectors. These connectors are also manufactured to compensate for vibration, expansion/contraction of busses and to deliver minimum resistance values.



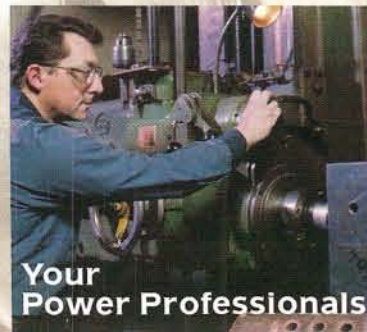
Forked Terminal Connections



For the automotive industry, our forked terminal connections efficiently eliminate busbar arrangements and reduce weight on robot arms. This solution eliminates premature abrasion wear.

Water-Cooled Jumpers

Our water-cooled jumpers are made from swaged cylindrical connectors crimped over copper stranding which minimizes wire breakage due to bending and fatiguing.



Your Power Professionals